

Model 38

Plug-In Filter Card

0.03Hz to 1MHz Low-Pass

0.03Hz to 300kHz High-Pass

Operating Manual



KH KROHN-HITE
CORPORATION

Service and Warranty

Krohn-Hite Instruments are designed and manufactured in accordance with sound engineering practices and should give long trouble-free service under normal operating conditions. If your instrument fails to provide satisfactory service and you are unable to locate the source of trouble, contact our Service Department at (508) 580-1660, giving all the information available concerning the failure.

DO NOT return the instrument without our written or verbal authorization to do so. After contacting us, we will issue a Return Authorization Number which should be referenced on the packing slip and purchase order. In most cases, we will be able to supply you with the information necessary to repair the instrument, avoiding any transportation problems and costs. When it becomes necessary to return the instrument to the factory, kindly pack it carefully and ship it to us prepaid.

All Krohn-Hite products are warranted against defective materials and workmanship. This warranty applies for a period of one year from the date of delivery to the Original Purchaser. Any instrument that is found within the one year warranty period not to meet these standards, will be repaired or replaced. This warranty does not apply to electron tubes, fuses or batteries. No other warranty is expressed or implied.

Krohn-Hite Corporation reserves the right to make design changes at any time without incurring any obligation to incorporate these changes in instruments previously purchased.

Modifications to this instrument must not be made without the written consent of an authorized employee of Krohn-Hite Corporation.

MODEL 38

*Plug-In Filter Card
0.03Hz to 1MHz Low-Pass
0.03Hz to 300kHz High-Pass*

Serial No. _____

Operating Manual

*Copyright©. 2005 Krohn-Hite Corporation. All rights reserved.
Contents of this publication may not be reproduced in any form
without the written permission of Krohn-Hite Corporation.
Printed in U.S.A. - 042505.*



15 Jonathan Drive, Unit 4, Brockton, MA 02301-5566 U.S.A.
Tel: (508) 580-1660; Fax: (508) 583-8989
sales@krohn-hite.com; www.krohn-hite.com

TABLE OF CONTENTS

SECTION 1 - GENERAL DESCRIPTION

- 1.1 INTRODUCTION 1-1
- 1.2 FUNCTION 1-1
- 1.3 FILTER MODE 1-1
- 1.4 AMPLIFIER MODE 1-1
- 1.5 GENERAL 1-2
- 1.6 OPTIONS 1-2

SECTION 2 - OPERATION

- 2.1 INTRODUCTION 2-1
- 2.2 OPERATING PROCEDURE 2-1
 - 2.2.1 Channel Selection 2-1
 - 2.2.2 All Channel Key Procedure 2-1
 - 2.2.3 Cutoff Frequency 2-1
 - 2.2.4 Input Gain (Pre-Filter) 2-1
 - 2.2.5 Output Gain (Post-Filter) 2-1
 - 2.2.6 Mode of Operation 2-1
 - 2.2.7 Filter Type 2-1
 - 2.2.8 Clear Entry Operation 2-2
 - 2.2.9 Storing Set-Ups 2-2
 - 2.2.10 Recalling Set-Ups 2-2
 - 2.2.11 Second Function Keys Operation 2-2
 - 2.2.12 Input Connectors 2-2
 - 2.2.13 DC Level Adjust (rear panel) 2-3
- 2.3 FILTER OPERATION 2-3
 - 2.3.1 Introduction 2-3
 - 2.3.2 Variable Band-Pass 2-3
 - 2.3.3 Amplitude Response 2-3
 - 2.3.4 Phase Response 2-3
 - 2.3.5 Group Delay 2-4
 - 2.3.6 Transient Response 2-4

TABLE OF CONTENTS

(CONTINUED)

SECTION 3 - IEEE-488 STD (GPIB) PROGRAMMING

3.1	INTRODUCTION	3-1
3.2	PRELIMINARY PROGRAMMING INFORMATION	3-1
3.2.1	GPIB Primary Bus Address	3-1
3.2.2	IEEE-488 Bus Interface Programming Connector	3-1
3.3	ASCII DATA COMMANDS	3-2
3.3.1	Format	3-2
3.3.2	Types of Data Commands	3-2
3.3.3	Table of ASCII Commands	3-2
3.3.4	Examples	3-2
3.3.4.1	Example 1	3-2
3.3.4.2	Example 2	3-3
3.3.4.3	Example 3	3-3
4.3	IEEE-488 STANDARD COMMANDS	3-3
3.4.1	Multiline Messages	3-3
3.4.2	Polling Commands	3-4
3.4.2.1	Parallel Polling	3-4
3.4.2.2	Service Request and Serial Polling	3-4
3.4.2.3	Serial Responses	3-4
3.4.3	Uniline Messages	3-5
3.5	TALKER FORMAT	3-5
3.5.1	Parameter Information Format	3-5
3.5.2	Model Number and Software Version Format	3-5
3.6	PROGRAMMING EXAMPLE	3-6
3.6.1	Example 1 - Microsoft Quick Basic	3-6

SECTION 4 - INCOMING ACCEPTANCE

4.1	INTRODUCTION	4-1
4.2	TEST EQUIPMENT REQUIRED	4-1
4.3	CUTOFF FREQUENCY ACCURACY CHECK	4-1
4.4	STOPBAND ATTENUATION CHECK	4-1
4.5	PRE-FILTER GAIN CHECK	4-2
4.6	NOISE CHECK	4-2
4.7	COMMON MODE REJECTION CHECK	4-2

TABLE OF CONTENTS

(CONTINUED)

SECTION 4 - INCOMING ACCEPTANCE (continued)

4.8	DISTORTION CHECK	4-2
4.9	AC/DC COUPLING CHECK	4-2

SECTION 1

GENERAL DESCRIPTION

1.1 INTRODUCTION

The Krohn-Hite Model 38 Butterworth/Bessel plug-in filter card is one of a family of filters which plug into the Model 3905B and 3916B Filter Mainframes, providing a tunable frequency range from 0.03Hz to 1MHz in the low-pass mode and 0.03Hz to 300kHz in the high-pass mode. Both modes can be extended down to 0.003Hz with the 002 option. The frequency response characteristic is either maximally flat (Butterworth) for clean filtering in the frequency domain, or linear phase (Bessel) to provide superior pulse or complex filtering is operator selectable.

Each Model 38 card is an 8-pole, wide range, low-pass/high-pass filter or an amplifier providing gains to 70dB in 0.1dB steps. The 38 will accept input signals of $\pm 10V$ peak at 0dB gain and has selectable ac or dc coupling. Overload detectors are standard and assist the user in detecting input signals or incorrect gain settings. Band-pass operation is achieved by simply connecting the two channels in series.

Applications of the Model 38 are ultra-sound measurements, random noise testing, sound recording, suppressing interference in audio communications and related fields of medical, geological, geophysical, oceanographic, military and many more.

1.2 FUNCTION

Low-pass filter, high-pass filter; voltage gain amplifier.

1.3 FILTER MODE

Type: 8-pole, Butterworth, Bessel.

Attenuation: 48dB/octave.

Tunable Frequency Range f_c : Low-pass, 0.03Hz to 1MHz; high-pass, 0.03Hz to 300kHz; (option 002, 0.003Hz).

Frequency Resolution: 3 digits, 0.5Hz to max f_c ; 2 digits, 0.03Hz to 0.5Hz; (option 002, 3 digits, 0.05Hz to 0.5Hz; 2 digits, 0.003Hz to 0.05Hz).

Cutoff Frequency Accuracy: $\pm 1\%$, 0.5Hz to 50kHz; $\pm 2\%$, 50.1kHz to max f_c ; $\pm 5\%$, 0.03Hz to 0.5Hz (option 002, $\pm 5\%$, 0.003Hz to 0.5Hz).

Relative Gain at f_c : $-3dB$, Butterworth; $-12.6dB$, Bessel. High-Pass Bandwidth (0dB gain): $>4MHz$.

Stopband Attenuation: $>80dB$.

Maximum Input: $\pm 10V$ peak at 0dB gain reduced in proportion to gain setting; ± 7 peak for LP, $f_c > 500kHz$, $f_{sig} > 500kHz$.

Pre-Filter Gain: 0dB, 10dB, 20dB, 30dB, 40dB, 50dB, $\pm 0.2dB$.

Post-Filter Gain: 0dB to 20dB in 0.1dB steps, $\pm 0.2dB$.

Wideband Noise (2MHz bandwidth detector): 0dB gain, $< 300\mu V_{rms}$ for $f_c \leq 5kHz$, $< 500\mu V_{rms}$ for $f_c \leq 50kHz$, $1mV_{rms}$ for $f_c > 50kHz$. Max. gain, $< 25\mu V_{rms}$ RTI.

Harmonic Distortion: $-80dB$ at 1kHz.

DC Stability (RTI): Typically $\pm 2mV/^\circ C$.

1.4 AMPLIFIER MODE

Bandwidth: $> 7MHz$ min. gain; $> 700kHz$ max. gain.

Response: $\pm 0.1dB$ typical, $\pm 0.5dB$ max.

Gain: 0dB to 70dB in 0.1dB steps, $\pm 0.2dB$.

Input: Differential or single-ended +(in phase), -(inverted).

CMRR: $> 60dB$ to 10kHz; $> 50dB$ to 100kHz.

Sensitivity: 3mV peak with 70dB total gain for 10V peak output.

Maximum Input: $\pm 10V$ peak at 0dB gain reduced in proportion to gain setting.

Impedance: 1 megohm in parallel with 100pf.

Coupling: ac (0.16Hz) or dc.

Maximum DC Component: $\pm 100V$ in ac coupled mode.

Output:

Maximum Voltage (open circuit): $\pm 10V$ peak.

Maximum Current: $\pm 80mA$ peak.

Impedance: 50 ohms.

DC Offset: Adjustable to zero volts.

Harmonic Distortion (1V output): $-80dB$ (0.01%) to 10kHz; $-60dB$ (0.1%) to 100kHz..

Wideband Noise (RTI, 2MHz BW detector): $200\mu\text{V}_{\text{rms}}$ min. gain; $25\mu\text{V}_{\text{rms}}$ max. gain.

DC Stability (RTI): Typically $\pm 10\text{mV}/^\circ\text{C}$.

1.5 GENERAL

Crosstalk Between Channels: -85dB below full scale with input source $< 50\text{ ohms}$.

Low-Pass Phase Match Between Channels: $\pm 2^\circ$ to 500kHz , $\pm 5^\circ$ to 1MHz . Only for cards purchased at the same time.

High-Pass Phase Match Between Channels: For $f_c \leq 100\text{kHz}$, $\pm 2^\circ$ for $f_{\text{sig}} \leq 500\text{kHz}$, 2° times $f_{\text{sig}}/500\text{kHz}$ for f_{sig} to 2MHz ; for $f_c > 100\text{kHz}$, $\pm 5^\circ$ for $f_{\text{sig}} \leq 500\text{kHz}$, 5° times $f_{\text{sig}}/500\text{kHz}$ for f_{sig} to 2MHz . Only cards purchased at the same time.

Gain Match Between Channels: $\pm 0.2\text{dB}$ max. to 100kHz .

Switch: For selection of Input, +(in phase), Differential or -(inverted).

Input/Output Connectors: BNC.

Power: 15 watts.

Weights: 1.75 lbs (.79kg).

1.6 OPTIONS

002: extends low end cutoff to 0.003Hz .

Ew38: Extended one year warranty.

Specifications apply at 25°C , $\pm 5^\circ\text{C}$.

SECTION 2

OPERATION

2.1 INTRODUCTION

The Model 3988 is a plug-in filter card covering the frequency range from 0.03Hz (0.003Hz with option 002) to 1MHz in low-pass mode and 300kHz in high-pass mode. The filter has three modes of operation: high-pass, low-pass and gain only.

2.2 OPERATING PROCEDURE

2.2.1 Channel Selection

Up and down controls [\uparrow] and [\downarrow] increase or decrease channel setting shown on the DISPLAY. When held, channels will cycle through all active channels continuously. Channel selection can also be accomplished by entering the desired channel number in the keyboard and momentarily pressing either up [\uparrow] or down [\downarrow] channel controls.

2.2.2 All Channel Key Procedure

When frequency, input/output gain, type, mode or coupling are entered or changed, and the LED in the [ALL CHAN] key is on, the new setting will also be entered in all other filters of the same card type.

2.2.3 Cutoff Frequency

Data entry keyboard controls [0] to [9] and [.] set the numeric value of the cutoff frequency desired. To program 1.5kHz press the [1][.][5] data keys and parameter keys [KILO] and [FREQ]. The cutoff frequency will be entered only in the channel displayed and indicated in Hertz in the four digit DISPLAY.

2.2.4 Input Gain (Pre-Filter)

Up and down GAIN SET controls [\uparrow] and [\downarrow] increase or decrease the input amplifier by 10dB up to 50dB. The two digit DISPLAY will indicate the selected gain setting.

2.2.5 Output Gain (Post Filter)

Up and down GAIN SET controls [\uparrow] and [\downarrow] increase or decrease the output amplifier by dB. The two digit DISPLAY will indicate either 00 or 20dB.

2.2.6 Mode of Operation

When the [MODE] key is pressed, the DISPLAY indicates the mode of operation in the channel displayed, alternating as the [MODE] key is pressed between low-pass "L.P.", high-pass "h.P.", band-pass "b.P." and gain "gAIIn" which connects input to output.

2.2.7 Filter Type

The DISPLAY will indicate the filter type in the channel displayed when the [TYPE] key is pressed, alternating between Butterworth "bu." and Bessel "bES." response.

NOTE: For gains >10dB, the decimal point is off for whole dB's (10, 11, 12, Etc.), but ON for fractional (10.1 – 10.9, 11.1 – 11.9, Etc.).

2.2.8 Clear Entry Key Operation

When entering a numeric value in the keyboard, but not specifying a parameter, pressing the clear entry key will function as an error correction procedure and restore DISPLAY to its previous set-up.

When a numeric value and its parameter has been entered and the numeric value is then changed, pressing the [CE] key will restore DISPLAY to the previous value of that parameter.

When either the [SECOND FUNCTION][STORE] or [RECALL] key is pressed, the next memory location will be indicated on the DISPLAY. Pressing the [CE] key will restore DISPLAY to its previous setting.

When the DISPLAY contains information other than the frequency, pressing the [CE] key will restore the DISPLAY to the current frequency.

If the Model 3905B or 3916B is operating via the IEEE-488 bus (the front panel REMOTE LED is 'on'), pressing the [CE] key will return unit to LOCAL operation.

2.2.9 Storing Set-Ups

If a memory location is entered into the keyboard, pressing the [SECOND FUNCTION][STORE] key will store the entire five card (Model 3905B) or sixteen card (Model 3916B) set-ups into the memory location selected. The maximum number of memory locations is 85 in the Model 3905B and 25 in the Model 3916B.

When the [SECOND FUNCTION][STORE] key is first pressed, the DISPLAY indicates the number of the next memory location available. For example, the DISPLAY will indicate the following: “n=09”. Pressing the [SECOND FUNCTN] [STORE] key again will store the set-up currently in all channels into that memory location. If another memory location is desired enter that location on the keyboard and then press the [SECOND FUNCTION][STORE] key.

When the [SECOND FUNCTION][STORE] key is pressed to indicate the next memory location only, pressing the clear entry key [CE] will restore the DISPLAY to the current frequency.

2.2.10 Recalling Set-Ups

If a memory location is entered into the keyboard, pressing the [RECALL] key will recall the entire five (Model 3905B) or sixteen (Model 3916B) card set-ups from the memory location selected.

When the [RECALL] key is first pressed, the DISPLAY indicates the number of the next memory location to be recalled. For example, the DISPLAY will indicate the following: “n=09”. Pressing the [RECALL] key again will recall the set-up of all five (Model 3905B) or sixteen (Model 3916B) cards from that memory location.

When the [RECALL] key is pressed to indicate the next memory location to be recalled only, pressing the clear entry key [CE] will restore the DISPLAY back to the previous setting.

2.2.11 Second Function Key Operation

The [SECOND FUNCTION] key in conjunction with other keys provides additional filter characteristics and permits GPIB front panel data entry.

Pressing the [SECOND FUNCTION] key followed by the [AC/DC] key will display the input coupling, indicating “AC” or “dC”, and will alternate when the two keys are pressed again only in the low-pass and band-reject mode. High-pass and band-pass modes are AC only.

When the [SECOND FUNCTION] key followed by the [ADDR] key are pressed, the DISPLAY will indicate the existing GPIB address setting. To select a different one, enter it in the data keys from [0] to [30] and press the [SECOND FUNCTION] and [ADDR] keys (See Section 3.2.1 of the 3905B or 3916B manual).

When the [SECOND FUNCTION] key followed by the [ALL CHAN] key are pressed, the DISPLAY will indicate the existing Line Termination Code Sequence. To select a different one, enter it in the data keys from [0] to [30] and press the [SECOND FUNCTION] and [ALL CHAN] keys (See Section 3.2.1 of the 3905B or 3916B manual).

2.2.12 Input Connectors

The Model 38 is labeled – and +.

NOTE

A slide switch is provided on the rear panel for selecting the INPUT BNC connector desired. The selections are +, DIFF and –. The + is a non-inverting input, the – input is inverting and DIFF is for differential operation.

2.2.13 DC Level Adj (Rear Panel)

Proper procedure for adjusting input and output dc levels can be found in the Calibration section of this manual.

2.3 FILTER OPERATION

2.3.1 Introduction

The Model 38 is an 8-pole filter which can be either low-pass, high-pass or gain-only. Each mode can be either Butterworth or Bessel response type.

2.3.2 Variable Band-Pass

2.3.2.1 Band-Pass

Variable band-pass response is obtained by connecting the output of one channel to the +input of another (with differential switch set to “+”). Apply the signal to the input of the first channel; the output signal will be at the second channel output BNC connector. Set first channel to high-pass and other to low-pass. Enter the lower cutoff frequency to first and the higher cutoff to other.

2.3.3 Amplitude Response

Each channel of the Model 38 can operate in either the low-pass or high-pass mode at 48dB/octave attenuation and provide either maximally flat (Butterworth) amplitude response or linear phase (Bessel) operation. Comparative amplitude response characteristics in both modes are shown in Figure 2.1A and 2.1B.

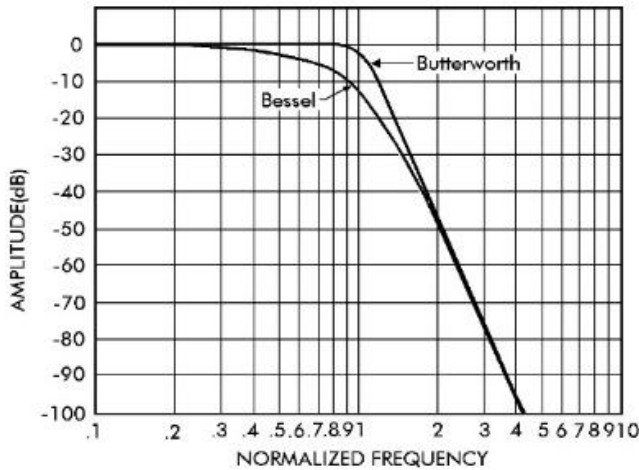


Figure 2.1A Low-Pass Amplitude Response

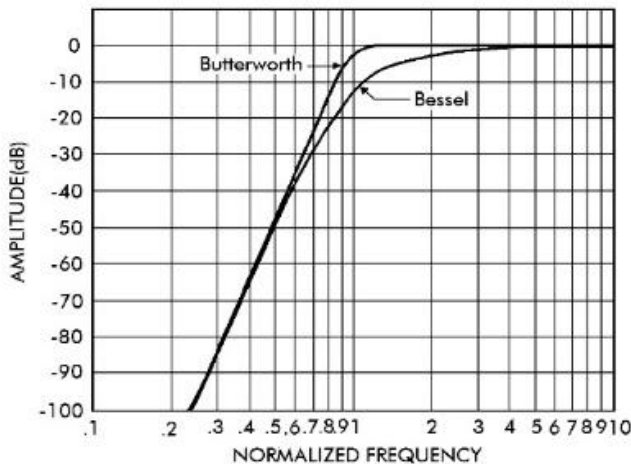


Figure 2.1B High-Pass Amplitude Response

2.3.4 Phase Response

Phase characteristics of the Model 38 is shown in Figure 2.2. The filter provides output phase relative to the input over a 10:1 frequency range.

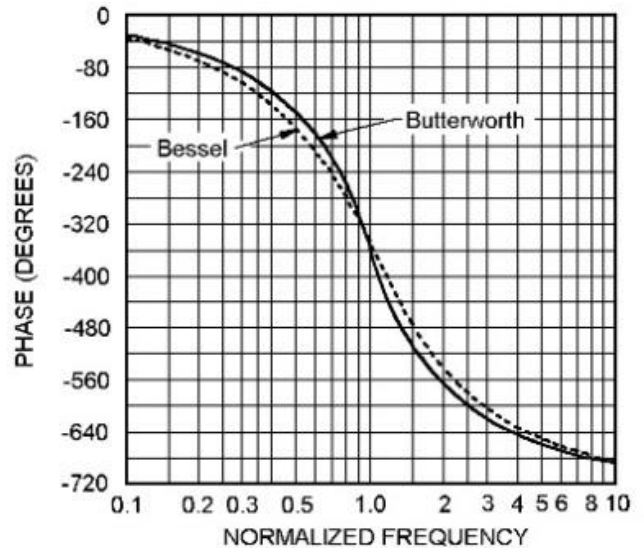


Figure 2.2 Phase Response

2.3.5 Group Delay

Group delay¹, shown in Figure 2.3, is defined as the derivative of radian phase with respect to radian frequency, which is the slope of the phase curve. A flat group delay is considered a linear phase response which corresponds to a constant slope of the phase curve. With linear phase response, the distortion of complex data signals will be minimized because their various frequency components, due to constant time delay, will not shift relative phase.

[1] IEEE Standard Dictionary of Electrical and Electronic Terms, Institute of Electrical and Electronic Engineers, IEEE-STD 100-1977, Second Edition, 1977, page 296.

In numeric terms, the zero frequency phase slope is $-293.7^\circ/\text{Hz}$ for Butterworth and $-351.9^\circ/\text{Hz}$ for Bessel, when normalized for a cutoff frequency of 1Hz. This will be 2π times greater in $^\circ/\text{Hz}$ for a cutoff of 1 radian/sec or $-1845^\circ/\text{Hz}$ and $-2211^\circ/\text{Hz}$ respectively. Dividing by 360 converts $^\circ/\text{Hz}$ to radians/radians-per-sec yields a group delay time of 5.13s for Butterworth and 6.14s for Bessel.

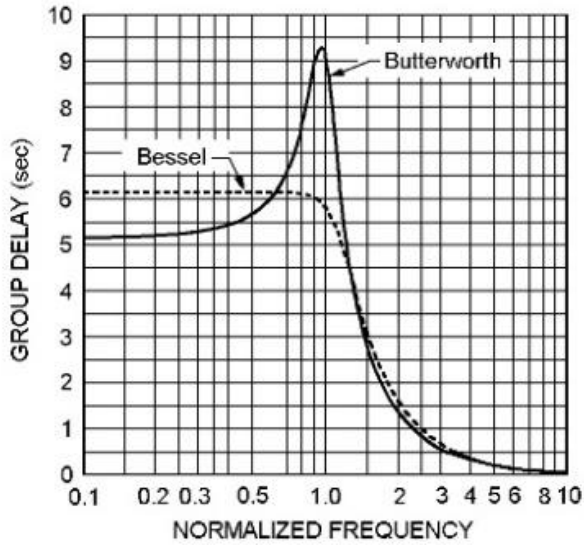


Figure 2.3 Group Delay

2.3.6 Transient Response

The normalized response for a unit step voltage applied to the input of the Model 38 operating in the low-pass mode with both Butterworth and Bessel response is shown in Figure 2.4

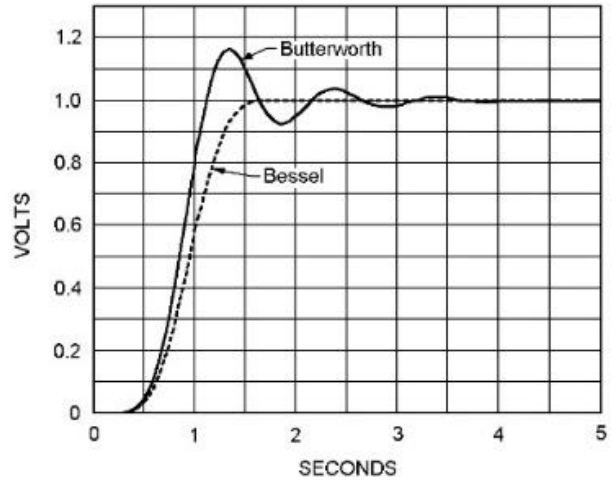


Figure 2.4 Transient Response

SECTION 3

IEEE-488 STD (GPIB) PROGRAMMING

3.1 INTRODUCTION

The Model 38 remote programming interface accepts both ASCII data commands and IEEE-488 standard commands (ATN true) for control of the unit.

In presenting the information required to program the Model 38 via the IEEE-488 STD bus, this manual presupposes a user knowledge of both ASCII data and IEEE-488 bus commands.

3.2 PRELIMINARY PROGRAMMING INFORMATION

3.2.1 GPIB Primary Bus Address

The GPIB primary address and software line-termination-character-sequence (LTCS) selection is set via the front panel keyboard as listed in Tables 3.1 and 3.2. These two parameters are stored in non-volatile memory and will be remembered indefinitely, even when the power to the unit is removed. They do not need to be reentered each time the unit is turned on.

The LTCS affects the GPIB in the TALKER mode only (data output from the 38 to the GPIB). After the printable characters have been sent, non-printable characters, such as carriage return (CR) and line feed (LF), are often required to achieve the desired results in various computers. Table 3.2 lists the various key sequences with the LTCS it selects.

Setting and Displaying the Primary GPIB Address		
Function		Keyboard Entry
a	To set a primary address from 0 - 30	[X][SHIFT][MEGA]
b	To display the primary address	[SHIFT][MEGA]

Table 3.1

Line Termination Character Sequence		
Line Termination Character Sequence		Keyboard Entry
a	None (EOI only)	[0][SHIFT] [ALL CHAN]
b	Carriage return (with EOI)	[1][SHIFT] [ALL CHAN]
c.	Line Feed (with EOI)	[2][SHIFT] [ALL CHAN]
d	Carriage return followed by line feed (with EOI)	[3][SHIFT] [ALL CHAN]
e	Line feed followed by carriage return (with EOI)	[4][SHIFT] [ALL CHAN]
f.	Display present LTCS	[SHIFT] [ALL CHAN]

Table 3.2

3.2.2 IEEE-488 Bus Interface Programming Connector

The rear panel programming connector, labeled "IEEE-488 PORT" (Figure 3.1), is the standard bus interface connector as specified in the IEEE-488 STD.



Figure 3-1

3.3 ASCII DATA COMMANDS

3.3.1 Format

The Model 38 employs free-format software commands, allowing the user to program a specific function in several different ways. See Section 3.3.3.

3.3.2 Types Of Data Commands

a. Commands fall into **two types**: Those involving numeric parameters and those that do not. Commands which involve numeric data contain (3) types of fields:

1. Numeric: Numeric fields may be floating point or scientific notation.

1	=	1.0
1.0	=	1.0
2.7E3	=	2.7×10^3
-2E3	=	-2×10^3
2E-3	=	2×10^{-3}

2. Multiplier: "KILO", "MEGA".
3. Parameter: Parameter (frequency, gain, channel, etc.) is included in Section 3.3.3.

b. Delimiters which may separate commands are the following: (; : / \ .)

c. Two consecutive character strings (i.e. parameter and multiplier) must have a space between them or they will be treated as one string.

d. The Model 38 uses an internal 32 character buffer for command processing. A line may be composed of multiple commands, separated by delimiters mentioned above. No commands are executed until the line is terminated with a line feed ASCII character (Hex 0A) or carriage return (Hex 0D) or by sending the end-or-identify (EOI) command with the last character.

3.3.3 Table Of ASCII Commands

In this Section there are characters that are underlined and characters that are **NOT** underlined. The characters that are underlined **MUST** be sent for the command to be recognized properly. Any additional characters may be sent once all the underlined letters are sent. Commands are case sensitive; upper case characters **MUST** be used.

MODEL 38 GPIB COMMANDS

Command Desired	Allowable Character String
-----------------	----------------------------

Input Gain	<u>IG</u>	set input gain
	<u>IU</u>	increase input gain (up)
	<u>ID</u>	decrease input gain (down)
Frequency	<u>E</u>	frequency
	<u>H</u>	frequency (Hz)
	<u>K</u>	kilo (10^3 multiplier)
	<u>ME</u>	Mega (10^6 multiplier)
Channel	<u>CH</u>	set channel
	<u>CU</u>	next channel (up)
	<u>CD</u>	previous channel (down)
Output Gain	<u>OG</u>	set output gain
	<u>OU</u>	increase output gain (up)
	<u>OD</u>	decrease output gain (down)
Type	<u>TY1</u>	Butterworth
	<u>TY2</u>	Bessel
Mode	<u>M1</u>	low-pass
	<u>M2</u>	high-pass
	<u>M3</u>	gain only
Coupling	<u>AC</u>	ac coupled
	<u>D</u>	dc coupled
Store	<u>ST</u>	store
Recall	<u>R</u>	recall
All Channel	<u>AL</u>	all channel mode
	<u>B</u>	NOT all channel mode
Misc.	<u>CE</u>	clear entry
	<u>OV</u>	overflow (1, 2, 3)
	<u>Q</u>	reports board model number(s) (see Section 3.5.4)
	<u>SRQON</u> <u>SRQOF</u> <u>V</u>	GPIB service request on GPIB service request off report model number and software version (see Section 3.5.3)

3.3.4 Examples

3.3.4.1 Example 1

To set both channels to 10dB input gain, 2kHz, 0dB output gain: AL; 10IG; 2K; 0OG <LF>

Note: *It is only necessary to send those parameters that change, all others remain unaffected.*

3.3.4.2 Example 2

To change frequency to 150Hz:

150H or 150bHZ†
or 150F
or 15K

or F150
 or H150
 or HZ150
 or K0.15
 or 1.5E2HZ
 or F1.5E2

3.3.4.3 Example 3

To read back the settings of channel 2 (see Section 3.5.1):

Data sent *to* filter: CH2

Data received *from* filter†: 10b2.000E+3b02b00bAC*

Interpretation:

10dB input gain
 2kHz cutoff frequency
 channel #2
 0dB output gain
 ac coupled
 all channel mode (indicated by the “**”)

3.4 IEEE-488 STANDARD COMMANDS

These commands are sent with ATN true as described in the standard.

3.4.1 Multi-Line Messages

<u>IEEE-488 Command</u>	<u>Mnemonic</u>	<u>Result</u>
My listen address	MLA	Enables unit to receive data.
Unlisten	UNL	Disables unit to receive data.
My talk address	MTA	Designates unit to receive data.
Untalk	UNT	Disables unit from sending data.
Local lockout	LLO	Disables return-to-local key [CE] on front panel such that when in remote mode, keyboard cannot be activated by pressing a front panel key.
Go to local	GTL	Puts unit into local control mode such that front panel keyboard is activated.

† b represents a space

Device Clear	DCL	When the device clear command is sent, the following parameters are changes regardless of their existing settings: Input Gain = 0dB, Output Gain = 0dB, Response = Butterworth, Mode = Low-Pass, Cutoff Frquency = 100kHz, Coupling = AC. Clears current settings for all channels. It does not clear set-up stored with [STORE] key. It does not change interface bus parameters and flags, such as: addresses, SRQ ON/OFF, parallel poll bit selected, etc.
Selected Device Clear	SDC	Performs same functions as device clear (DCL) except only if unit is addressed.

DISCUSSION: (See Section 2.8 and Figure 10 of the IEEE-488 Interface standard). Note that there are (4) possible states; local, remote, local-with-lockout, and remote-with-lockout. Front panel control is considered to be local while control from the system controller is considered to be remote. Selection of local or local-with-lockout and remote or remote-with-lockout is done several ways. When the unit is addressed to talk (MTA) or listen (MLA), it will enter into remote.

When GO-TO-LOCAL (GTL) is sent, it enters into local mode or local-with-lockout mode.

Also, if lockout mode is not invoked by the controller (local lockout command LLO), pressing the [CE] key when the remote LED is on will return control to the keyboard.

NOTE: *The lockout mode is not related to whether control is local or remote, only whether control can be returned to local by the [CE] key.*

Lockout mode (local-with-lockout and remote-with-lockout versus local and remote) is controlled by the controller. Sending the local lockout command (LLO) selects the local-with-lockout and remote-with-lockout pair versus remote and local without lockout out. Lockout can only be canceled by the controller placing the remote enable line false.

3.4.2 Polling Commands

The IEEE standard provides two methods of determining the status of the devices in the system; namely serial poll

and parallel poll. The parallel poll produces up to 8 bits of status from up to 8 different units simultaneously. A parallel poll is very fast but provides limited information. The serial poll provides 7 bits of status from one unit at a time.

3.4.2.1 Parallel Polling

The Model 38 provides for software configuring of which bit and with which polarity the unit should respond. This bit is “true” when an error condition exists. (“ERR” displayed on the panel). Configuring needs to be done only once or anytime the software desires to change the configuration. The commands related to parallel poll are as follows:

For sample sequences, see section 6.5.4 of the IEEE-488 standard.

IEEE-488 Command	Mnemonic	Result
Configure	PPC	Places unit into a state where it expects parallel poll enable and disable commands to establish which bits should be set or selected in response to a parallel poll.
Unconfigure	PPU	Removes unit from PPC state (UNL does the same, but also unlistens device).
Enable	PPE	When unit is in PPC state, it indicates which bit and which polarity the device should respond. Hex codes 60-67 selects bits 0-7 respectively to be set to 0 for a true response. Since logic 0 is HI on open collector lines, this provides a logical “OR” of all units designated to respond with a given line. Hex codes 68-6F selects bits 0-7 respectively to be set to 1 for a true (error) response. This can provide logical NAND of all units designated to respond with a given line.
Disable	PPD	Clears any configuration previously entered. This is only valid when unit is in PPC state.

Example: If the Model 38 to be configured is unit #5, and we want it to respond with a “1” when an error exists:

IEEE-488 Commands	Result
MLA 5	Addresses unit to be configured.
PPC	Places unit into parallel poll configured mode.

PPE 8	Configures bit #0 (LO 3 bits of command) to respond to a “1” (8’s bit) when an error exists.
UNL	Unlistens unit.

For additional sample sequences, see Section 6.5.4 of the Standard.

3.4.2.2 Service Request And Serial Polling

The IEEE-488 standard provides serial polling as a method of determining which unit caused a service request. When serial poll enable (SPE) is sent, the system enters into serial poll state. When a unit is addressed to talk, a single status byte will be sent. The hex 40 bit in this byte is true if that unit is requesting service. The remaining bits are used to provide status information. The Model 38 service request capability is enabled or disabled with the SRQON and SRQOFF commands (see Section 3.3.3). The unit turns on with service request disabled. This is an extension of the standard.

IEEE-488 Command	Mnemonic	Result
Enable	SPE	Unit enters serial poll when a unit is addressed to talk. It will send one status byte in which the Hex 40 bit is true if the unit is requesting service.
Disable	SPD	Unit exits serial poll state.

3.4.2.3 Serial Responses

The chart below lists the error numbers, in decimal notation, resulting a command error either from the bus or not from the bus.

The serial responses are:

1. No error: 0.
2. Error (error numbers in decimal notation); See the chart below.

NOTE: If *SRQ* is “ON” and the command which caused the error came from the bus, not the front panel, then the 64 bit will be set in the serial poll response, indicating that the unit requires service.

Error #	Description
1	Input gain too high or low.
2	Frequency too high.
3	Frequency too low.
4	Channel # too high.
5	Channel # too low.
6	Output gain too high or low.

- 7 Store page # too high.
- 8 Recall page # too low.
- 9 Type # invalid.
- 10 Mode # invalid.

3.4.3 Uniline Messages

IEEE-488

<u>Command</u>	<u>Mnemonic</u>	<u>Result</u>
End	END	Sent with the last byte of data. A line of data may either be terminated by a line feed character or by this command.
Identify	IDY	This command, issued by the controller, causes a parallel response which was previously configured by the PPC, PPD, PPE and PPU commands.
Request service	RQS	Generated in response to an error when a command came from the bus, and service request is enabled by the SRQON command.
Remote enable	REN	When true, allows the unit to respond to remote messages. When this line goes false, the unit will go to local-with-locloout state, activating the front panel.
Interface clear	IFC	Un-addresses all units and clears all states.

3.5 TALKER FORMAT

The Talker Software allows an IEEE-488 (GPIB) controller to interrogate the Model 38 and read back over the bus it's settings (gain, frequency, etc.) Four different types of data can be sent over the bus: Normally parameter information is returned unless an "OS", "Q" or "V" command is sent to the unit.

3.5.1 Parameter Information Format

1. Two (2) digits of input gain.
 - 1a. space
2. Four (4) digits plus decimal of frequency or other alpha.
 3. If frequency is displayed:
E+0 if both kilo and mega LEDs are off
E+3 if kilo LED is on
E+6 if mega LED is on otherwise 3 spaces
 - 3a. space
4. Two (2) digits, a decimal and one digit of channel #
 - 4a. space
5. Two (2) digits of output gain
 - 5a. space
6. "AC" if ac coupled "DC" if dc coupled
7. "*" if all channel mode, otherwise a space (See Section 3.3.4.3 for example)

3.5.2 Model Number and Software Version Format

After sending the "V" command, the next line of data read from the Model 38 will be as follows:

KROHN-HITE V3.26

The version number will reflect the revision level of the firmware in the instrument.

This data is returned only once per command; after that it returns to talking what the front panel display is showing.

3.6 PROGRAMMING EXAMPLES

The following are programming examples in Microsoft® Quick Basic™, Borland Turbo C and National Instruments IBIC.

3.6.1 Example 1 – Microsoft Quick Basic

```

‘ Microsoft (R) Quick Basic (tm) program for the Krohn-Hite Model 38‘
‘ * Enter this program from DOS by typing: QB 38 /LQBIB.QLB
‘   (the /L switch means tells Quick Basic to load a library)
‘
‘ * Set the instrument to GPIB address 1:
‘   Press 1 [SECOND FUNCTION] [MEGA]
‘
‘ * Set the instrument for no carriage return or line feed (EOI only):
‘   Press 0 [SECOND FUNCTION] [ALL CHAN]
‘
‘————— Initialize National Instruments Interface Board —————
‘
$INCLUDE: 'QBDECL.BAS'
CLS
CALL IBFIND("GPIB0", BRD0%): 'initialize access to the board
CALL IBFIND("DEV1", D38%): 'init access to the instrument, assumes addr 1!
CALL IBTMO(D38%, 10): ' set timeout to 300mS
‘
‘————— ————— Send/receive the data —————
‘
‘ Set to 500 Hz (500HZ), 0dB input gain (0IG), 0db output gain (0OG), ‘ DC coupled, re-display the frequency (F) so it will
be read over the bus.
‘
CALL IBWRT(D38%, "500HZ;0IG;0OG;DC;F"): IF IBSTA% <0 THEN GOTO gpiberr

‘ allocate a buffer (define a string long enough to hold the response)
‘ and read the meter
Buf$ = SPACE$(40): CALL IBRD(D38%, Buf$): IF IBSTA% <0 THEN GOTO gpiberr

‘Shorten the buffer to the # of characters actually received and print it
Buf$ = LEFT$(Buf$, IBCNT%)
PRINT "Read: "; Buf$

‘ Send UNLISTEN(?), UNTALK(_) so the bus will be in an idle state
CALL IBCMD(BRD0%, "?_"): IF IBSTA% <0 THEN GOTO gpiberr
‘ Set to 333 Hz, 20dB input gain (20IG), 20dB output gain (20OG), AC coupled,
‘ and again display frequency in the main display window.
‘

```

```
CALL IBWRT(D38%, "333HZ;20IG;20OG;AC;F"): IF IBSTA% <0 THEN GOTO gpiberr
Buf$ = SPACE$(40): CALL IBRD(D38%, Buf$): IF IBSTA% <0 THEN GOTO gpiberr
Buf$ = LEFT$(Buf$, IBCNT%)
PRINT "Read: "; Buf$
CALL IBCMD(BRD0%, "?_"): IF IBSTA% <0 THEN GOTO gpiberr
```

```
‘
‘-----Cleanup and End----- 51-----
‘
```

cleanup:

```
CALL IBONL(BRD0%, 0): 'Release the board file handle
CALL IBONL(D38%, 0): 'Release the instrument file handle
```

END

gpiberr:

```
PRINT "IBSTA%="; HEX$(IBSTA%); ", IBERR%="; IBERR%: GOTO cleanup
```

‘

3.6.2 Example 2 – Borland Turbo C

```
/*
```

```
* Borland Turbo C Example Program for the Krohn-Hite Model 38 multichannel
* filter using the NI-488
* Should work with Microsoft C also.
```

```
*/
```

```
*/=====
```

```
*
```

```
* This sample program sends and receives data from a Krohn-Hite model 38
```

```
*
```

```
* * In the Borland IDE, place "MCIB.OBJ" in your project list
```

```
*
```

```
* * Set the instrument to GPIB address 1:
```

```
* Press [1] [SECOND FUNCTION] [MEGA]
```

```
*
```

```
* * Set the instrument for no carriage return or line feed (EOI only):
```

```
* Press [0] [SECOND FUNCTION] [ALL CHAN]
```

```
*
```

```
* This program assumes the name of the device at address 1 hasn't been
```

```
* changed in IBCONFIG (it's still called DEV1, which is the default.)
```

```
*
```

```
* The status variables IBSTA, IBERR, and IBCNT are defined in DECL.H.
```

```
* Each bit of IBSTA and each value of IBERR are defined in DECL.H as
```

```
* a mnemonic constant for easy recognition in application programs. In
```

```
* this example, these mnemonic definitions are logically ANDed with the
```

```

* variable IBSTA to determine if a particular bit has been set. The mnemonic
* definitions are equated with the variable IBERR to determine the error
* code.
*
* The function GPIBERR is called when a NI-488 function fails. The
* error message is printed along with the status variables IBSTA, IBERR,
* and IBCNT.
*
* The NI-488 function IBONL is called from the main body of the program or
* from the function GPIBERR. When the second parameter of the function
* IBONL is zero, the software and hardware are disabled.
* Execution of this program is terminated after the call to the function
* IBONL to disable the software and hardware.
*
* The function EXIT is used to terminate this program within the function
* GPIBERR. The exit status is set to 1 to indicate an error
has occurred.

*
*/=====
*/

#include <stdio.h>
#include <stdlib.h>
#include <string.h>

/* DECL.H contains constants, declarations, and function prototypes. */

#include "decl.h"
#define DEVNUM "dev1" /* Set instrument to GPIB address 1 */

/* GPIBERR is an error function that is called when a NI-488 function fails. */
void gpiberr(char *msg);

char rd[255]; /* read data buffer */
int GpibDev,GpibBoard; /* device handles */

void main() {

    printf("\nSending data to the Krohn-Hite model 38...\n");
    printf("\n");

```

```

/*
 * Assign a unique identifier (a 'handle') to the K-H 38 and store it in the
 * variable GpibDev. If GpibDev is less than zero, call GPIBERR with an error
 * message.
 */
GpibDev = ibfind (DEVNUM);
if (GpibDev <0) gpiberr("ibfind Error");

/*
 * Assign a handle to the GPIB board so we can use ibcmd to send board
 * level commands such as UNL and UNT.
 */
GpibBoard = ibfind ("gpib0");
if (GpibBoard <0) gpiberr("ibfind Error");

/*

 * Clear the K-H 38 to its default state. The settings vary depending on the
 * type of board in each channel. These settings are listed in the GPIB
 * section of the manual for each filter board (not the 38 manual).
 * If the error bit ERR is set in IBSTA, call GPIBERR with an error message.
 */
ibclr (GpibDev);
if (ibsta & ERR) gpiberr("ibclr Error");

/*
 * Write a string out to the K-H 38.
 * If the error bit ERR is set in IBSTA, call GPIBERR with an error message.
 */
ibwrt (GpibDev,"500HZ;0IG;0OG;DC;F",18L); /* the 'F' displays the frequency so when*/
if (ibsta & ERR) gpiberr("ibwrt Error"); /* we read the unit we'll see the freq */

/*
 * Read the K-H 38. If the error bit ERR is set in IBSTA, call GPIBERR with
 * an error message.
 */
ibrd (GpibDev,rd,30L);
if (ibsta & ERR) gpiberr("ibrd Error");

/* Append the null character to mark the end of the data */
rd[ibcnt] = '\0'; /* do this BEFORE calling ibcmd because ibcnt will be */

```

```

printf("Read: %s\n", rd);    /* changed by any 'ib' calls. */

ibcmd(GpibBoard,"?_",2L);   /* send unt, unl */
if (ibsta & ERR) gpiberr("ibcmd Error");

/*
* Change the K-H 38 setting
*/
ibwrt (GpibDev,"333HZ;20IG;20OG;AC;F", 20L); /* the 'F' displays the frequency so when*/
if (ibsta & ERR) gpiberr("ibwrt Error"); /* we read the unit we'll see the freq */

/*
* Read the K-H 38 again like before.
*/
ibrd (GpibDev,rd,30L);
if (ibsta & ERR) gpiberr("ibrd Error");

rd[ibcnt] = '\0';
printf("Read: %s\n", rd);

ibcmd(GpibBoard,"?_",2L); /* send unt, unl */
if (ibsta & ERR) gpiberr("ibcmd Error");

/* Call the ibonl function to disable the hardware and software. */
ibonl (GpibDev,0); /* Release the device handle */
ibonl (GpibBoard,0); /* Release the board handle */

exit(0); /* exit with no error */

} /* main */

/*=====
*
*           Function GPIBERR
*
* This function will notify you that a NI-488 function failed by
* printing an error message. The status variable IBSTA will also be
* printed in hexadecimal along with the mnemonic meaning of the bit position.
* The status variable IBERR will be printed in decimal along with the
* mnemonic meaning of the decimal value. The status variable IBCNT will
* be printed in decimal.
*
*
* The NI-488 function IBONL is called to disable the hardware and software.

```

```

*
* The EXIT function will terminate this program.
*=====
*/

void gpiberr(char *msg) {
    unsigned int i;

    /* Table of ibsta (interface board status word) bit positions and
       corresponding messages */
    static struct { int bit; char *msg;} ibstaMsg[16]=
        { {ERR, "ERR"},
          {TIMO, "TIMO"},
          {END, "END"},
          {SRQI, "SRQI"},
          {RQS, "RQS"},

          {SPOLL," SPOLL"},
          {EVENT," EVENT"},
          {CMPL, "CMPL"},
          {LOK, "LOK"},
          {REM, "REM"},
          {CIC, "CIC"},
          {ATN, "ATN"},
          {TACS, "TACS"},
          {LACS, "LACS"},
          {DTAS, "DTAS"},
          {DCAS, "DCAS"} };

    /* Table of iberr error messages */
    static struct { int val; char *msg;} iberrMsg[15]=

        { { EDVR," EDVR <DOS Error>\n"},
          { ECIC," ECIC <Not CIC>\n"},
          { ENOL," ENOL <No Listener>\n"},
          { EADR," EADR <Address error>\n"},
          { EARG," EARG <Invalid argument>\n"},
          { ESAC," ESAC <Not Sys Ctrlr>\n"},
          { EABO," EABO <Op. aborted>\n"},
          { ENEB," ENEB <No GPIB board>\n"},
          { EOIP," EOIP <Async I/O in prg>\n"},
          { ECAP," ECAP <No capability>\n"},

```



```

{ EFSO," EFSO <File sys. error>\n"},
{ EBUS," EBUS <Command error>\n"},
{ ESTB," ESTB <Status byte lost>\n"},
{ ESRQ," ESRQ <SRQ stuck on>\n"},
{ ETAB," ETAB <Table Overflow>\n"} };

printf ("%s\n", msg); /* Print the application supplied context message. */
/*
* The ibsta variable provides the primary information about the cause of
* the error: print it's value and mnemonic for each bit set.
*/

printf ("ibsta = &H%x <", ibsta);
for (i=0; i<=15; i++)
    { if (ibsta & ibstaMsg[i].bit) printf ("%s",ibstaMsg[i].msg); };
printf (" >\n");

/*
* Print the iberr value and interpretation
*/

printf ("iberr = %d", iberr);
for (i=0; i<=14; i++)
    { if (iberr==iberrMsg[i].val) printf ("%s",iberrMsg[i].msg); };
/*
* Print ibcnt in decimal
*/

printf ("ibcnt = %d\n", ibcnt);
printf ("\n");
/* put the board and device offline */
ibonl (GpibDev,0); /* Release the device handle */
ibonl (GpibBoard,0); /* Release the board handle */
exit(1); /* exit with status=1 to indicate error */.

```

SECTION 4

INCOMING ACCEPTANCE

4.1 INTRODUCTION

The following procedure should be used to verify that the Model 38 filter is operating within specifications. These checks may be used for incoming acceptance and periodic performance checks. Tests must be made with all covers in place and operating for a minimum of 30 minutes to reach operating temperature. If the unit is not operating within specifications, refer to Section 5, Calibration, before attempting any detailed maintenance. Before testing, follow the initial set-up and operating procedure in Section 2.

4.2 TEST EQUIPMENT REQUIRED

The test equipment below is required to perform the following tests:

- Low Distortion RC Oscillator: Krohn-Hite Model 4402B or equivalent.
- RC Oscillator: 10Hz to 10MHz, frequency response of $\pm 0.025\text{dB}$ from 10Hz to 500kHz. Krohn-Hite Model 4300B or equivalent.
- AC Voltmeter: capable of measuring 100mV to 10Vrms, 10MHz bandwidth, Fluke Model 8920A or equivalent.
- Frequency Counter.
- Distortion Analyzer: Krohn-Hite Model 6900B or equivalent.

If the [ALL CHAN] key is not lit, press the [ALL CHAN] key to turn on ALL CHANNEL mode. Perform each test on channel 1, then repeat it on channel 2.

4.3 CUTOFF FREQUENCY ACCURACY

Place BNC tees on the oscillator's output and the filter's '+' Input and set the filter's differential input switch on rear panel to '+'. Connect the frequency counter to the oscillator, the oscillator to the filter '+' Input, and the AC meter to the filter Input. Set the filter to Butterworth with the [TYPE] key, low-pass with the [MODE] key, 0dB input gain, 0dB Output gain and 5kHz with the [FREQ] key. Set the oscillator to 5kHz, 1VRMS. Set the meter to read 0dB (*dB* and *REL* mode on the Fluke 8920). Connect the meter to the filter output; adjust the oscillator frequency to get -3.01dB .

The frequency on the counter should be $5\text{kHz} \pm 1\%$. Change the filter to high-pass, adjust the oscillator frequency for 3.01dB ; the counter should read $5\text{kHz} \pm 1\%$.

Change the filter to low-pass mode, Bessel type. Adjust the oscillator frequency for -12.59dB ; the frequency on the counter should be $5\text{kHz} \pm 1\%$. Change the filter to high-pass, adjust the oscillator frequency for -12.59dB ; the counter should read $5\text{kHz} \pm 1\%$.

Repeat the entire above procedure for 50Hz, 500Hz, 50kHz and 300kHz. Also check 500kHz and 1MHz in low-pass only. The tolerance for 300kHz, 500kHz and 1MHz is 2%. It is important to re-reference the voltmeter at each new frequency since the amplitude of the generator will change with changes in frequency.

4.4 STOPBAND ATTENUATION

Accurate stopband attenuation measurements require some simple precautions because of low level signals. The filter should be shielded with the top and bottom covers in place. BNC cable only should be used between oscillator, filter and voltmeter, and no other instruments should be connected.

Set the oscillator to 5Vrms, 20kHz and connect it to the '+' Input with the filter set to a cutoff frequency of 1kHz and 0dB of Input and Output gain. Connect the Output through a 6kHz passive high-pass filter, as shown in Figure 4.1, to the ac voltmeter. (Fluke 8920 should have 'low range enable' pressed in.). Set the filter to low-pass mode. The filter Output should be $< 700\mu\text{Vrms}$ (-80dB).

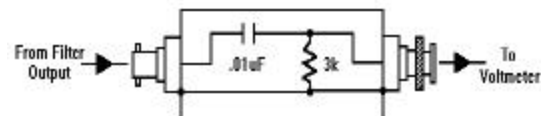


Figure 4.2 Passive High-Pass Filter

4.5 PRE-FILTER AND POST-FILTER

With a BNC tee, connect both the oscillator and the AC meter to the filter '+' Input. Set the filter to GAIN with the [MODE] key. With the meter in volts mode, set the oscillator to 1kHz, and about 700mVrms. Set the meter to read 0dB (dB and REL mode on the Fluke 8920). Connect the meter to the filter output. Set the input gain to 10dB, the meter should read 9.8 to 10.2dB.

Set the input gain to 20dB, The meter should read 19.8 to 20.2dB. Set the input gain to 0dB, set the output gain to 1dB by pressing [1] and either of the output gain arrows. The meter should read 0.8 to 1.2dB. Set the output gain to 2dB to 20dB in 1dB steps, checking the meter for ± 0.2 dB accuracy.

Set the output gain to 0dB. Connect the meter to the filter '+' Input and set it to volts mode. Set the oscillator to about 70mVrms. Set the meter to read 0dB (dB and REL mode on the Fluke 8920). Connect the meter to the filter output. Set the input gain to 30dB, the meter should read 29.8 to 30.2dB.

Set the input gain to 40dB, the meter should read 39.8 to 40.2dB.

Connect the meter to the filter input and set it to volts mode. Set the oscillator to about 25mVrms. Set the meter to read 0dB (dB and REL mode on the Fluke 8920). Connect the meter to the filter output. Set the input gain to 50dB, the meter should read 49.8 to 50.2dB.

It is important that the generator be low noise; passive BNC attenuators produce the best results, placed at the filter input.

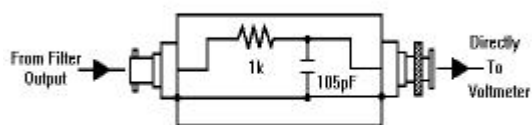


Figure 4.3 Passive 2MHz Low-Pass Filter

4.6 NOISE CHECK

Short the '+' inputs of both filter channels and set the channel being tested to 0dB input gain, 0dB output gain, low-pass (mode key), Butterworth (type key), DC coupled (press [SECOND FUNCTION] then [TYPE], if display shows 'AC' press [SECOND FUNCTION][TYPE] again; display will show 'DC').

Connect a 2MHz low-pass, passive filter, shown in Fig 4.2, to the ac voltmeter and, using a short coax BNC cable, connect it to the model 38's output. Set the filter to 5kHz. Voltmeter reading should be 300mV or less.

Set the filter to high-pass ([MODE] key). Voltmeter reading should be 300 μ V or less. Set the filter to 50kHz, low-pass. Voltmeter reading should be 500 μ V or less. Set the filter to high-pass. Voltmeter reading should be 500 μ V or less.

Set the filter to 1MHz, low-pass. Voltmeter reading should be 1mV or less. Set the filter to high-pass. Voltmeter reading should be 1mV or less. Set input gain to 50dB and output gain to 20dB (press [20] and either of the output gain arrows). Voltmeter should read 80 μ V or less.

4.7 COMMON MODE REJECTION

Turn off the [ALL CHANNEL] mode for this test. Connect a BNC tee to the '+' input of the filter, connect a short coax cable from the tee to the '-' input and connect the oscillator to the other side of the tee. Connect the ac voltmeter to the output. Set the filter to GAIN mode (using the [MODE] key) and 0dB input and output gain.

With the differential input switch set to '+' set the oscillator to 10kHz and adjust the amplitude for 7Vrms on the meter. Set the rear panel differential input switch to the center (DIFF) position and set the output gain to 20dB (press [20] then either of the output gain arrows). The meter should read 70 μ V or less (-60dB common mode rejection).

Set the oscillator to 100kHz and the meter should read 220mV or less (-50dB). Set rear panel differential switch to '+' and turn [ALL CHANNEL] mode on.

4.8 DISTORTION

4.8.1 Signal Checks

Set the filter to a cutoff frequency of 10kHz in the low-pass mode with 0dB of Input and Output gain. Connect a low distortion oscillator to the Input and apply a 1Vrms signal at 1kHz.

Monitor the Output of the filter with a distortion analyzer. The reading should be <0.01%.

Connect a 50 ohm terminator to the Output of the filter. Distortion should be <0.01%. Remove the terminator.

Disconnect oscillator and distortion analyzer.

4.9 AC/DC COUPLING CHECK

Apply a 1Vdc signal to the Input of the filter. Set the filter to low-pass mode with 0dB Input and Output gain.

In the DC Coupled mode, the Output of the filter should be approximately 1Vdc and approximately 0Vdc in the AC COUPLED mode.