

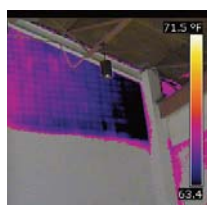
# B-Series InfraRed Camera (320 x 240 IR Resolution)

With on board Visual Camera, Fusion, Touch Screen LCD & Interchangeable Lens

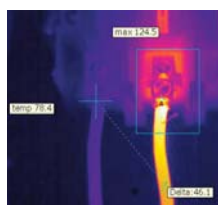
- 0.05°C @ 30°C Thermal Sensitivity
- Bright Video Lamp
- Annotate Images with Voice, Text and Sketch
- Thermal Fusion & Picture-in-Picture
- 3.5" Touch-Screen LCD Display
- Convenient 120° rotating lens
- 8X Continuous Zoom
- Analysis/Reporting Software included
- Instant Report



Multifunction Touch Screen



Thermal Fusion



Differential Temperature



## FLIR B400 Features

- **High Resolution IR Images** — 76,800 pixels (320 x 240) Infrared resolution
- **Visible Light Digital Camera** — 3.1MP resolution with flash provides sharp images regardless of lighting conditions
- **8X Continuous Zoom** — Zoom with auto/manual focus
- **Rotating Lens** — Rotating lens detents up to 120° for easy viewing angle
- **Insulation Alarm** — Detects areas that don't fulfill the insulation requirements
- **Dew Point Alarm** — Displays areas with risk of surface condensation where mold growth could occur
- **Scalable Thermal Fusion** — Blending of thermal and digital images in real-time
- **Scalable Picture in Picture (PIP) Fusion** — Displays thermal image super-imposed over a digital image
- **Video Lamp** — Allows the visual camera and fusion to be used in poorly lit environments
- **Temperature Range** — From -4 to 662°F (-20 to 350°C) targeting insulation, HVAC, and building applications; Optional higher temperature up to 2192°F/1200°C available
- **± 2% Accuracy** — reliable temperature measurement
- **Thumbnail Image Gallery** — Allows quick search of stored images
- **Li-Ion Rechargeable Battery** — lasts >4hrs continuous use; replaceable
- **Copy to USB** — Easy upload of an Instant Report, an image, or a folder from the camera to a USB memory stick
- **Laser LocatIR™ Pointer** — Pinpoints a reference spot with a laser and aligns a marker to it on the image
- **IR Window Correction** — Menu settings allow you to account for transmission loss through IR windows
- **Voice Comment Recording** — on images & can be integrated onto report
- **Wireless Communication** — Bluetooth® Transmitter with METERLiNK™
- **Instant Report** — Create a Thermographic Inspection report directly in the camera
- **Digital Video** — Records video to the memory card
- **Periodic Image Storage** — Stores images every 10 sec up to 24 hrs
- **Panorama Mode** — On-screen guide to assist in aligning multi-image captures
- **Temperature Screening** — Audible alarm sounds when temperature exceeds programmable set point
- **Includes** — SD Memory Card (stores >1000 Radiometric JPEG images), Li-Ion rechargeable battery with 100-260V AC adaptor/charger, two rechargeable batteries, 2-bay battery charger, QuickReport software, USB Mini-B cable, Bluetooth® USB micro adapter, sun shield, stylus pen & headset, camera lens cap, and hard transport case
- **Interchangeable Optics** — Optional 6°, 15°, 45°, 90°, Close up: 100, 50, 25µm, easily attach to the camera



Warranty extended to 2 years when the camera is registered



### Advanced Panorama Function

This unique function allows you to conveniently piece together normal sized images to create one large image for a wide angle view of the area being measured. The FLIR B400 has an on-screen guide to assist in aligning multi-image captures before using FLIR BuildIR or Reporter Software to create a panorama picture.



**METERLiNK** frees the Thermographer from the manual process of collecting field data



Infrared cameras quickly locate moisture related problems



Collecting moisture readings on damaged surfaces and associating them with regions on an infrared image can be a complicated and cumbersome process



Manual data collection is time-consuming and prone to errors. METERLiNK eliminates this problem by allowing the thermographer to quickly take moisture readings on a damaged surface and associate those readings with the corresponding targets stored in an infrared image

### Software Packages

**QuickReport™** PC software enables users to Organize, Analyze and Create Reports with FLIR Cameras.

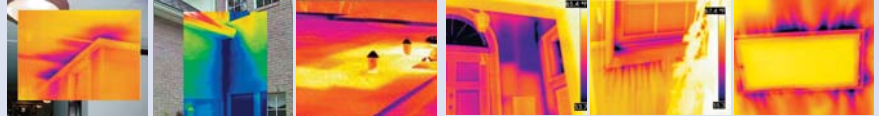
**FLIR BuildIR Software** package specifically designed to carry out advanced analysis of building structures. It is used to analyze images taken with an infrared camera, and create inspection reports based on these images.

**FLIR Reporter Ver. 8.5** is a powerful software for creating compelling and professional, fully customized, easy-to-interpret reports in a standard MS Word Document. You can create a report by simply Dragging and Dropping your images on a desktop icon or using the Wizards to guide you step-by-step through the process. The saved document is a 'live' report with full access to the analysis tools and temperature measurement data. The reports can be multi-page and include all of your IR inspection data -infrared and visual images, temperature measurements, voice comments and text notes.



**FLIR ThermaTrak™**  
If your IR camera is lost or stolen, ThermaTrak can help you track where it is.

## Applications



Water Damage — Water leak on ceiling, gutter, and roof top      Insulation — Energy Loss, Home Inspection, and HVAC

## FLIR B400 Specifications

Features	
Temperature range	-4°F to 662°F (-20°C to 350°C); Optional Higher Temperature available
Image Storage	1000 radiometric JPEG images (SD card memory)
Imaging Performance / Image Presentation	
Frame Rate	30Hz
Field of view/min focus distance	25° x 19°/1.31ft (0.4m)
Focus	Manual/Automatic
Thermal sensitivity (N.E.T.D)	<0.05°C at 30°C
Detector Type - Focal plane array (FPA) uncooled microbolometer	320 x 240 pixels
Spectral range	7.5 to 13µm
Display	Built-in touch-screen 3.5" color LCD
Image modes	Thermal/Visual/Fusion/Panorama
Image annotation	Voice (60 sec); text comments, Sketch, image markers on IR/Visual
Lens	25° (optional 6°, 15°, 45°, 90°, Close up 100, 50, 25µm lenses available)
Video Lamp	Bright LED lamp
Laser Classification/Type	Class 2/Semiconductor AlGaInP Diode Laser: 1mW/635nm (red)
Set-up controls	Mode selector, color palettes, configure info to be shown in image, local adaptation of units, language, date and time formats, and image gallery
Measurement modes	5 Spotmeters, 5 Box areas, Isotherm, Auto hot/cold spot, Delta T
Measurement correction	Reflected ambient temperature & emissivity correction
Battery Type/operating time	Li-Ion/ >4 hours, Display shows battery status
Charging system	In camera AC adapter/2 bay charging system
Shock	25G, IEC 68-2-29
Vibration	2G, IEC 68-2-6
Dimensions/Weight	4.2x7.9x4.9" (106x201x125mm)/1.94lbs (0.88kg), including battery
Warranty	2 years (Warranty extended to 2 years when the camera is registered)

## Ordering Information

Part Number	
45303-0202	FLIR B400 Thermal Imaging InfraRed Camera (320x240)
ACCESSORIES*	
1196398	Li-Ion Rechargeable Battery
1910399	AC Adapter Charger (110-240V, U.S. Plug)
1910490	Cigarette Lighter Adapter Kit, 12VDC (1.2m cable)
T197650	2-Bay Battery Charger including Power Supply (multi plugs)
1124545	Camera Pouch Case
T197000	High Temperature Option 2192°F/1200°C
T197613	BuildIR Software package
T197717	FLIR Reporter Ver. 8.5 Professional
4114887	FLIR ThermaTrak™
CERTIFICATION TRAINING	
T-BSC	Certification in Infrared Building Science per attendee (3.5 Day Class)
ITC-RESNRG-2	Thermal Imaging for Residential Energy Audits Training per attendee (2 Day Class)
ITC-RESNRG-4	Thermal Imaging for Residential Energy Audits Certification per attendee (4 Day Class)

\*Optional Camera Lenses available. Please refer to the Camera Lens Datasheet

Tel: 1.877.744.FLIR | [www.extech.com/bseries](http://www.extech.com/bseries)

Specifications and prices subject to change without notice. Rev. 04/15/10-R1  
Copyright © 2010 Exttech Instruments Corporation (A FLIR Company). All rights reserved including the right of reproduction in whole or in part in any form.

